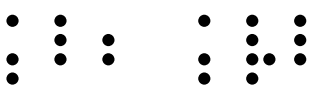
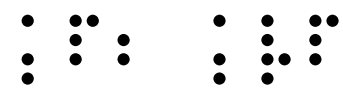


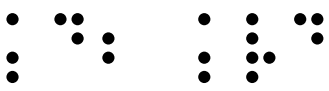
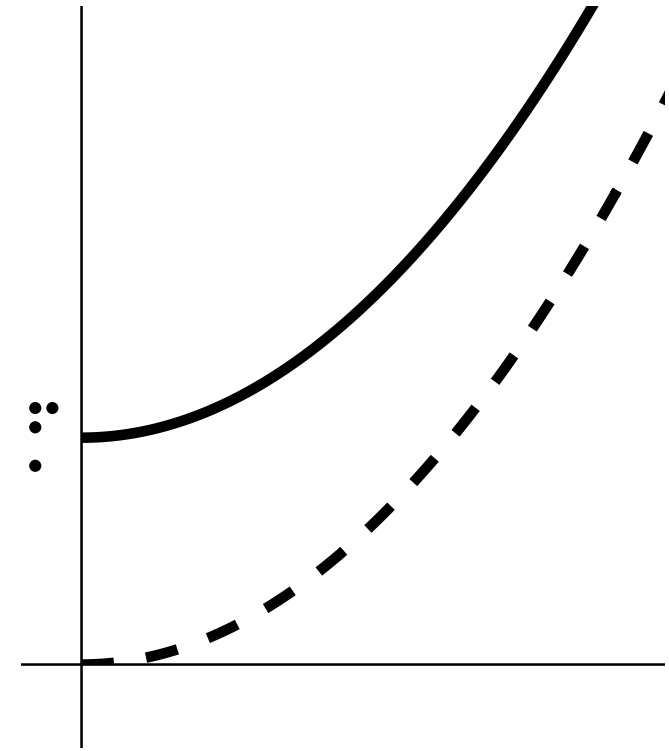
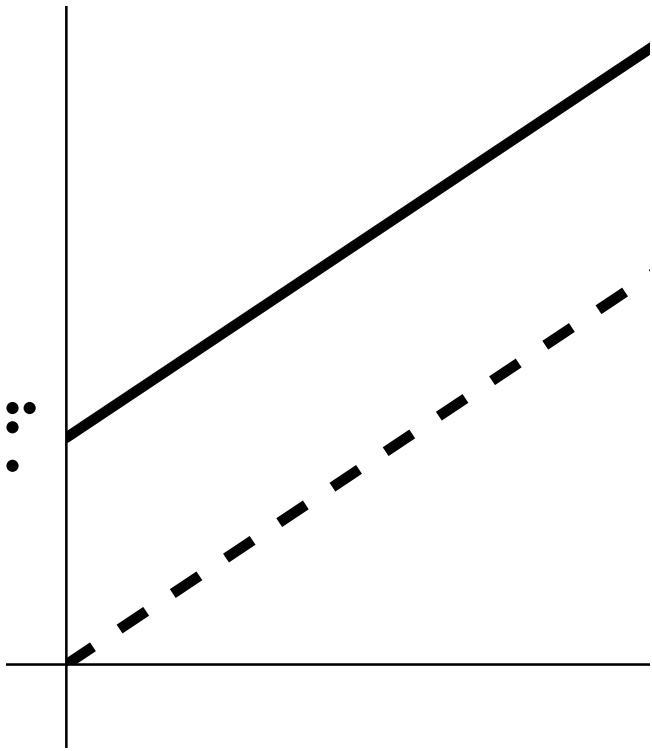
Wi Kostenfunktionen, 1/16



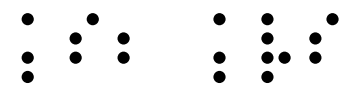
$K_1; KV_1$



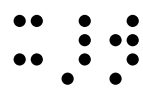
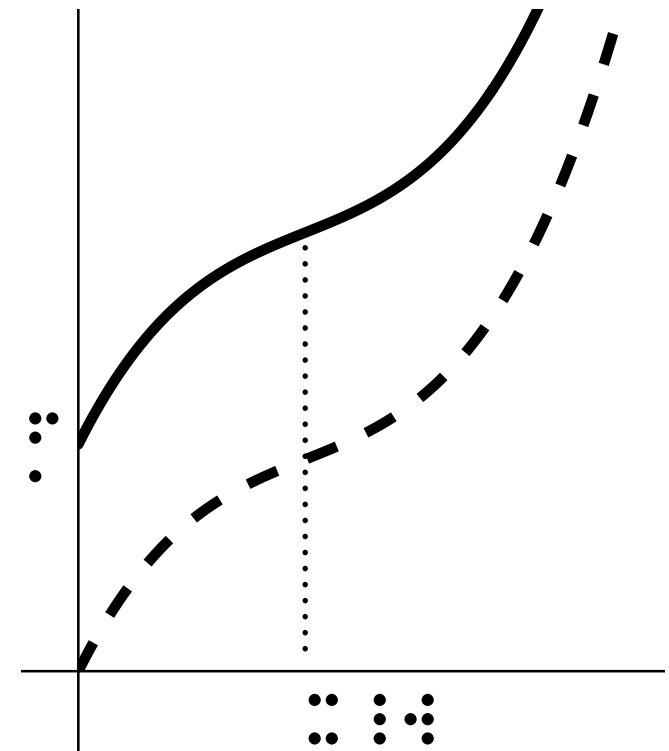
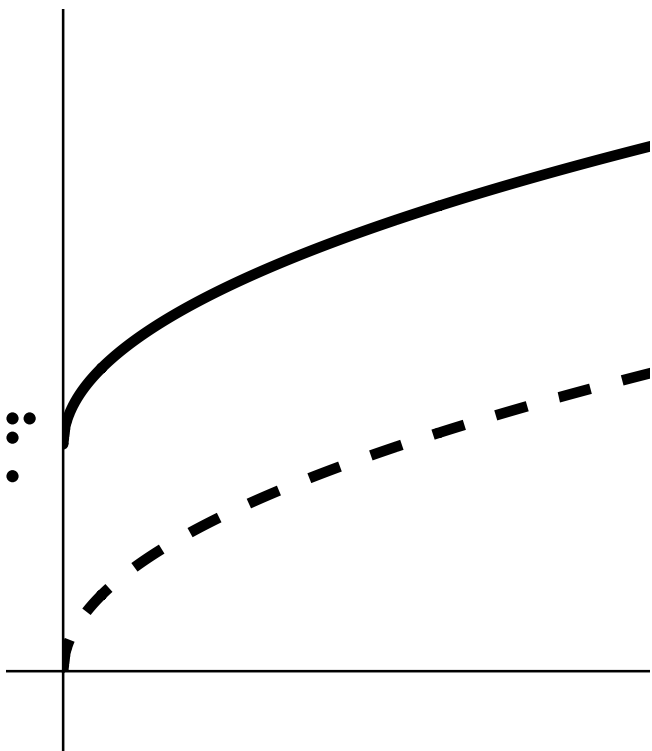
$K_p; KV_p$

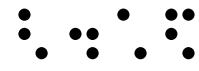
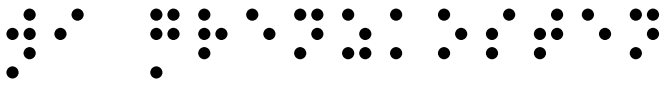


$K_d; KV_d$

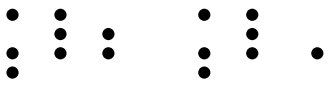


$K_s; KV_s$

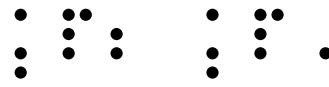




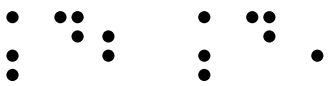
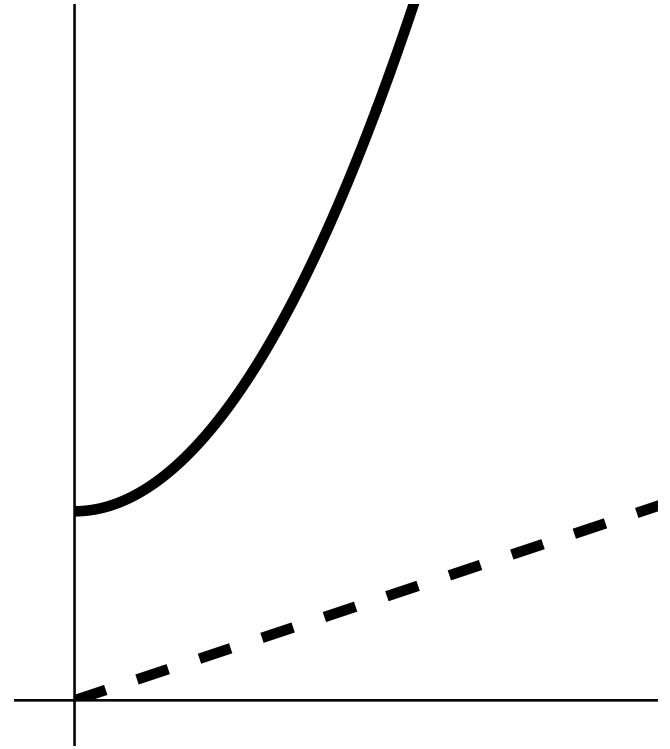
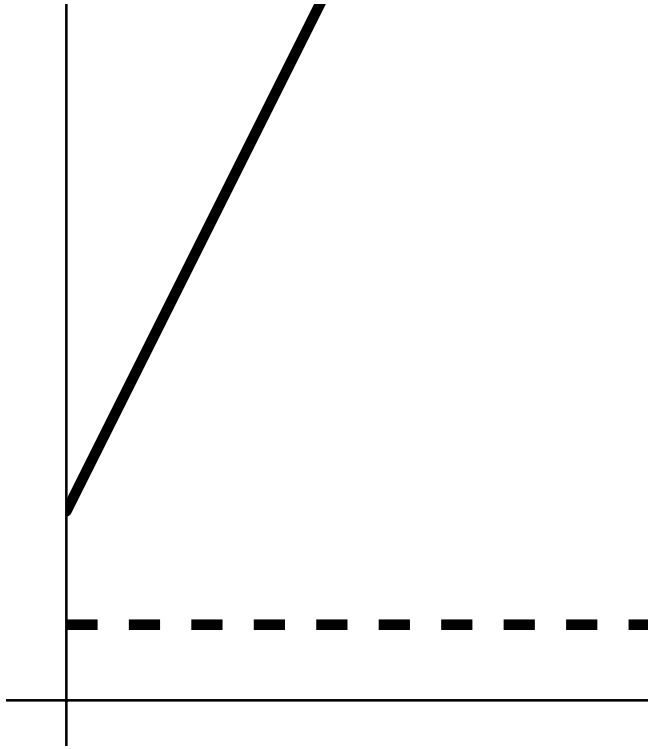
Wi Grenzkosten, 2/16



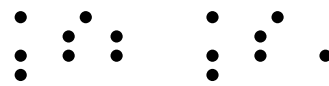
$K_1; K_1'$



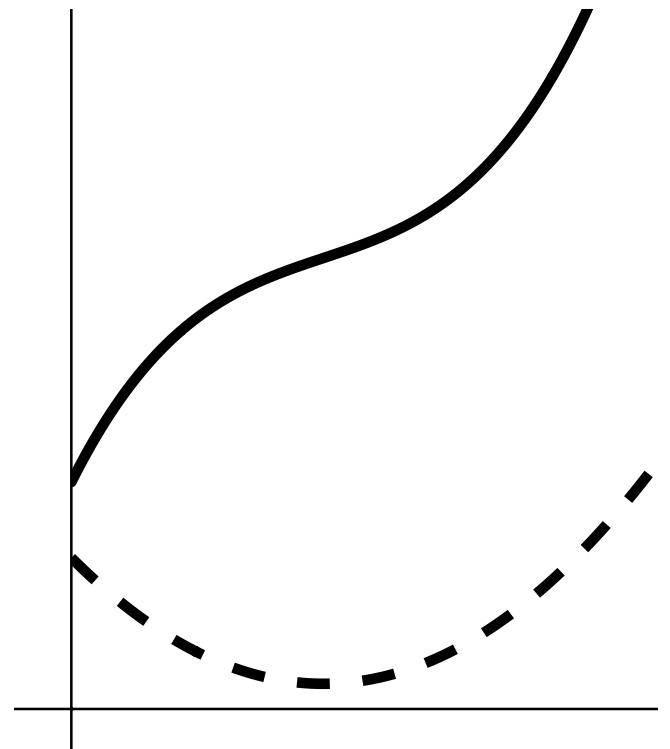
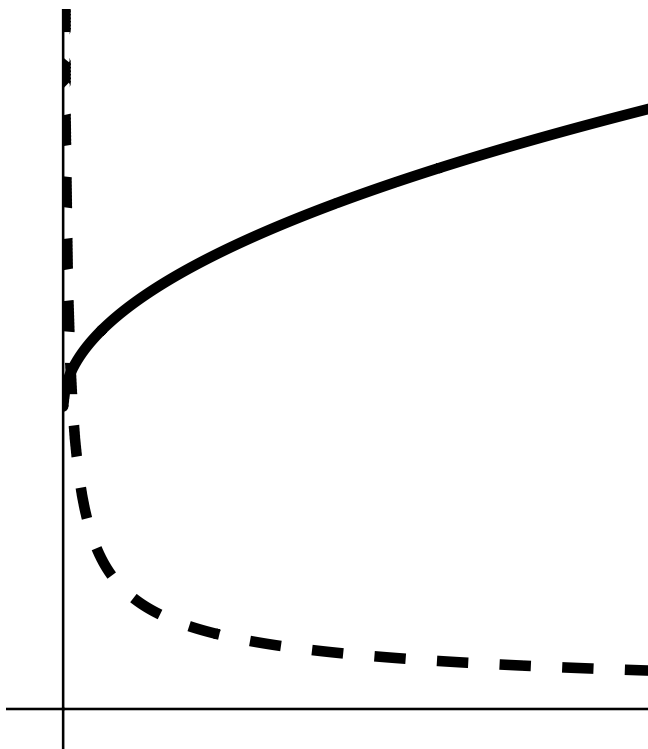
$K_p; K_p'$

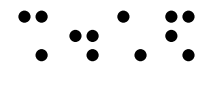
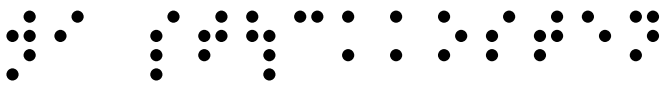


$K_d; K_d'$

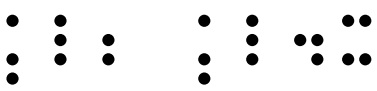


$K_s; K_s'$

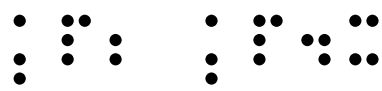




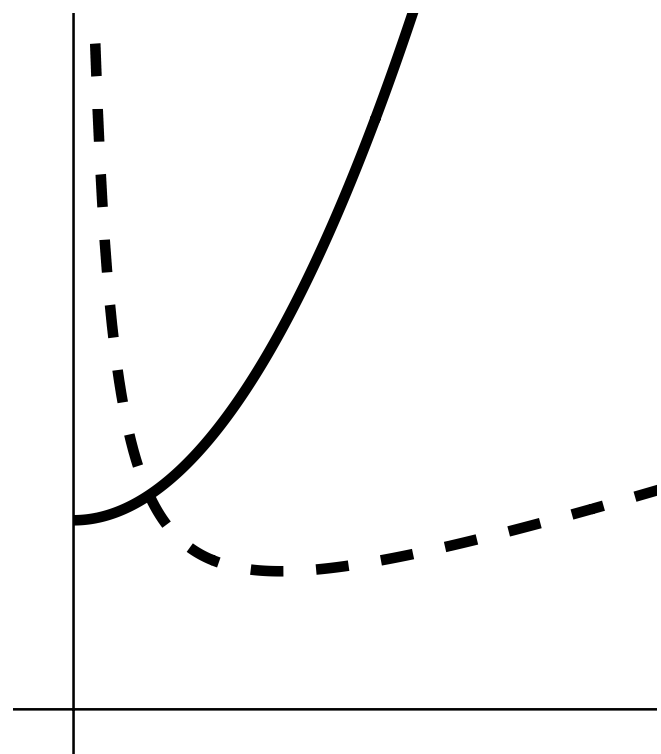
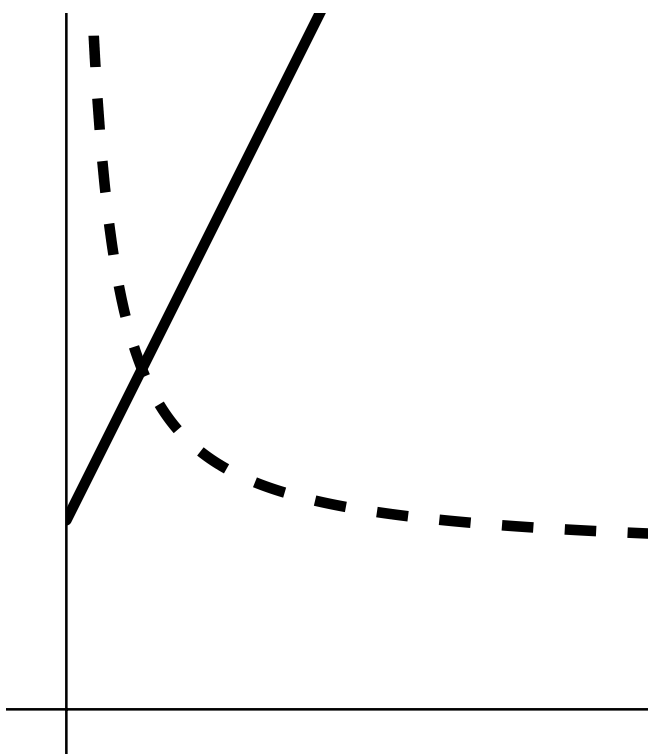
Wi Stückkosten, 3/16



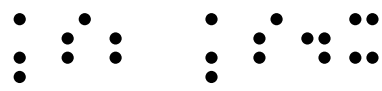
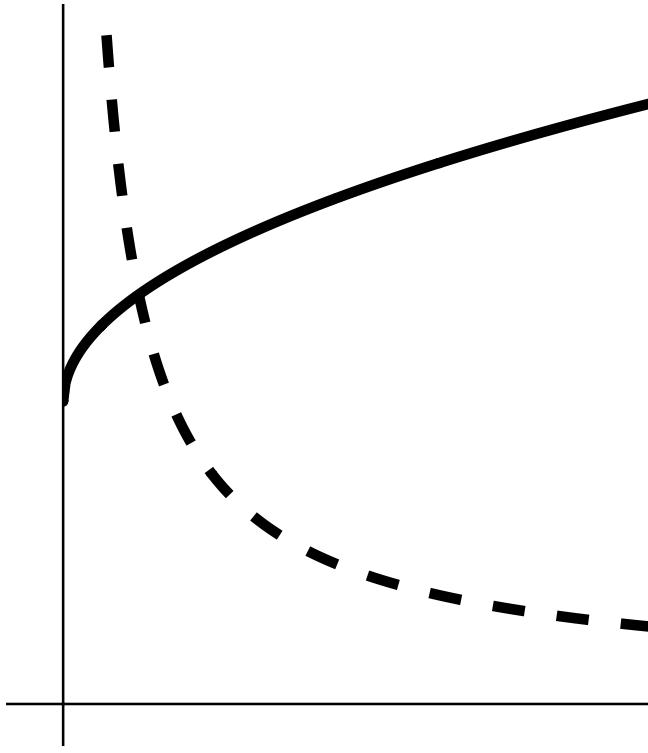
$K_1; K_1/x$



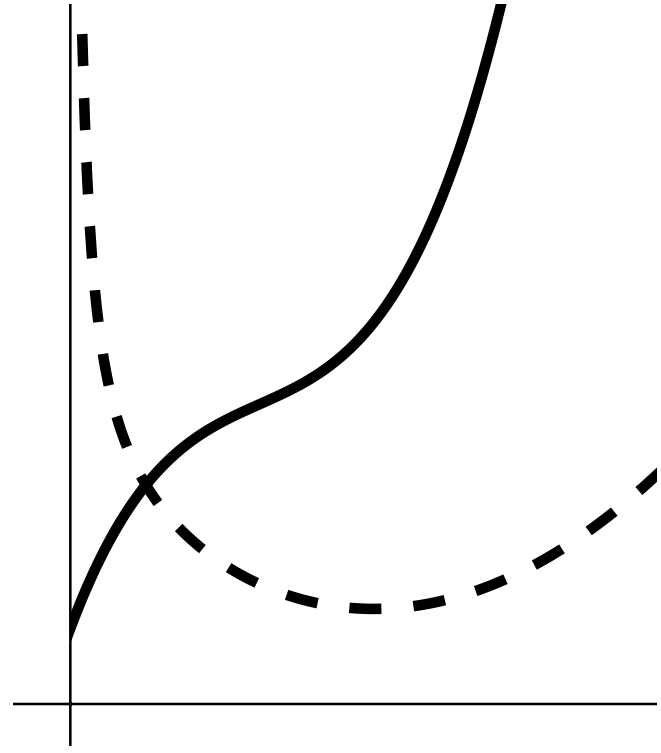
$K_p; K_p/x$



$K_d; K_d/x$



$K_s; K_s/x$



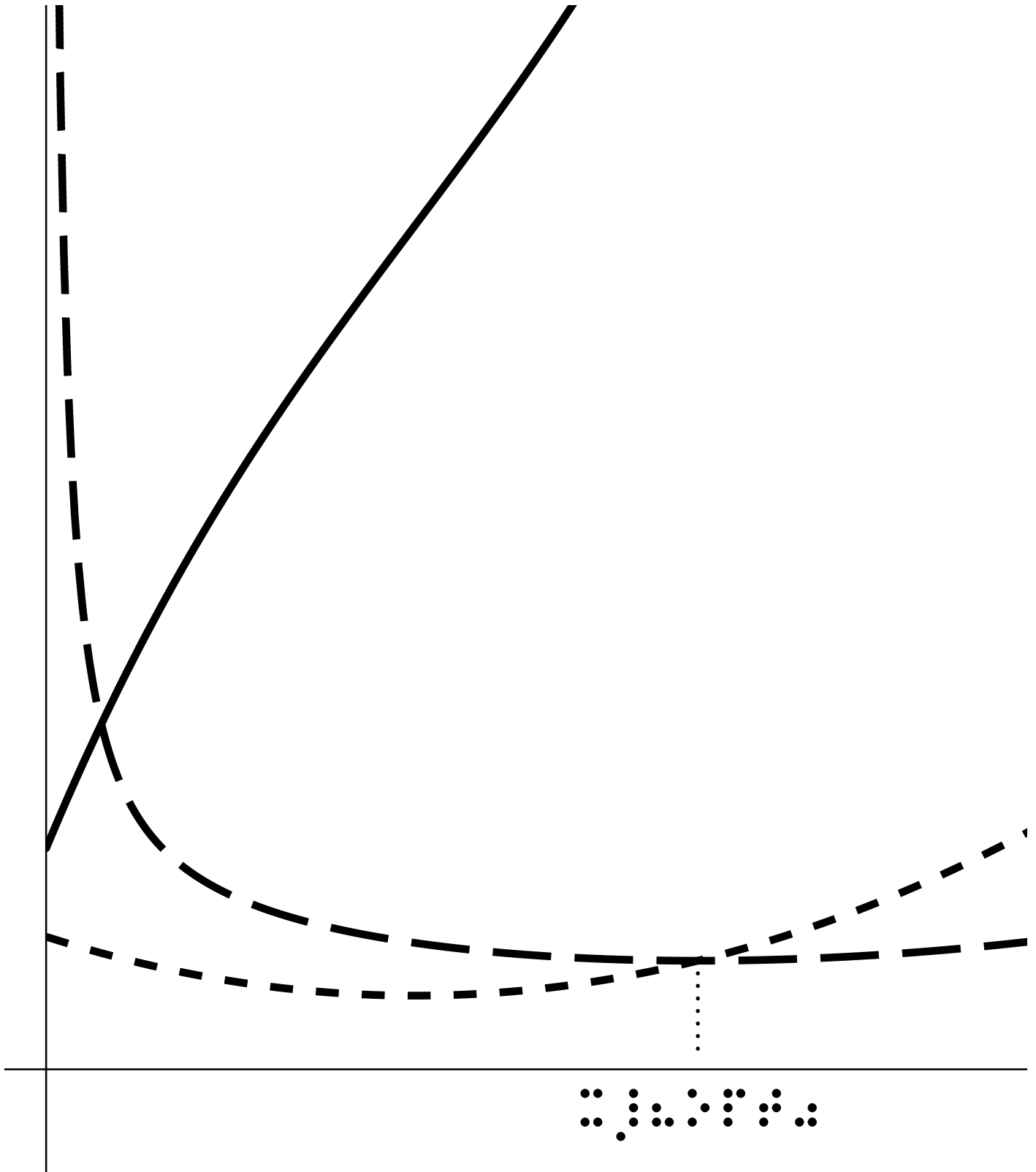


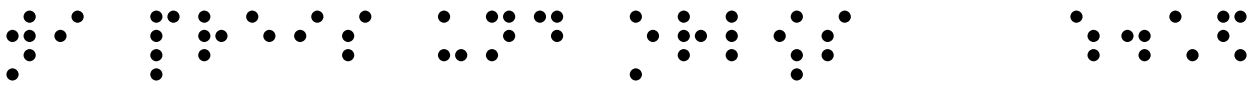
Wi Betriebsoptimum, 4/16

Braille text: \dots

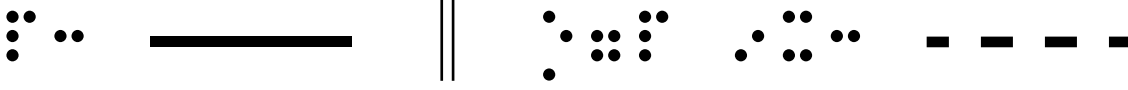
Braille text: \dots

$K_s; K_s; K_s/x$

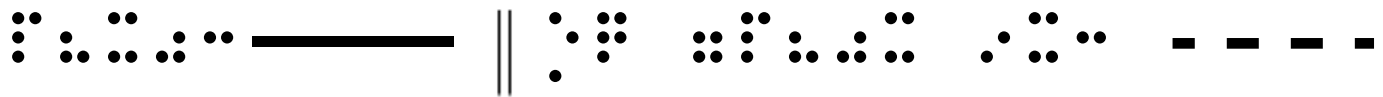
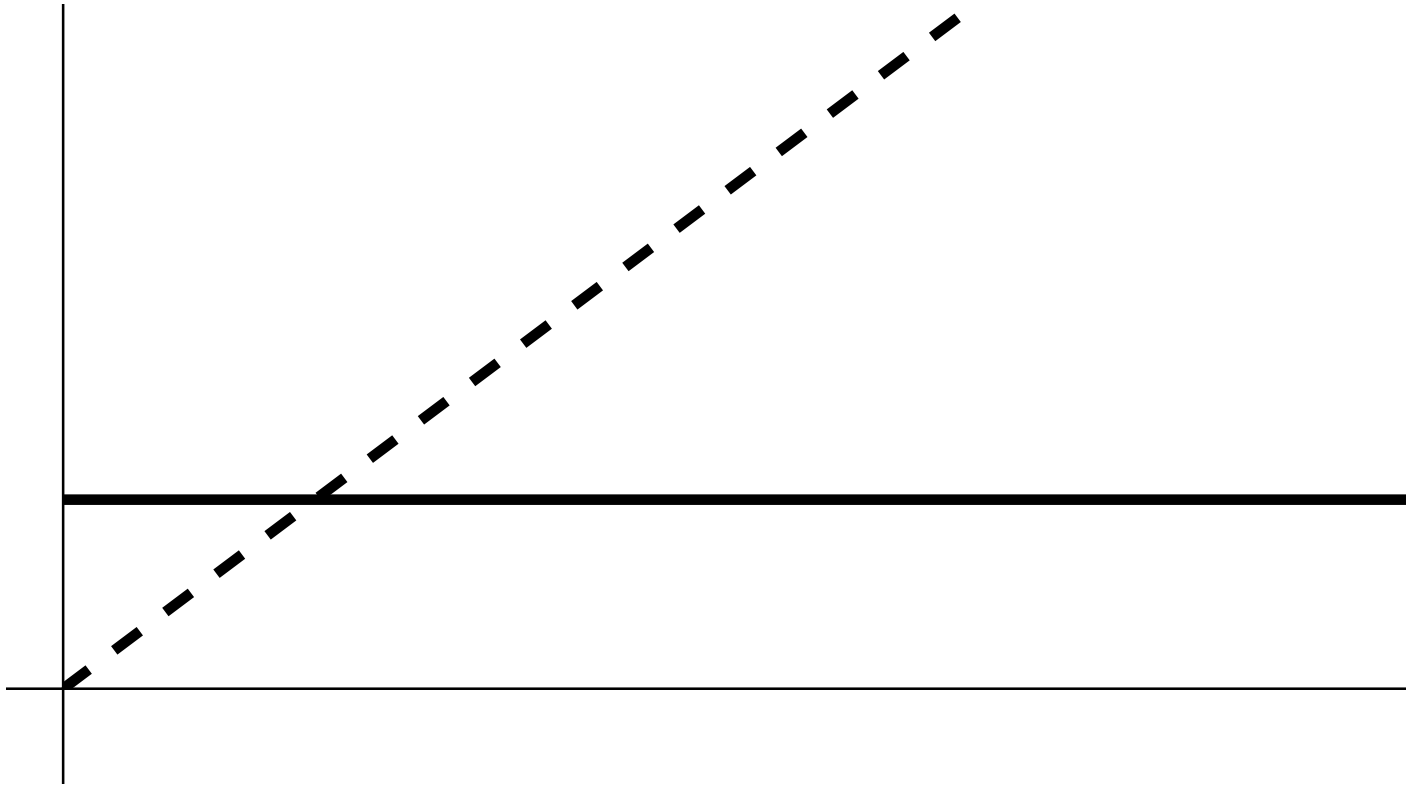




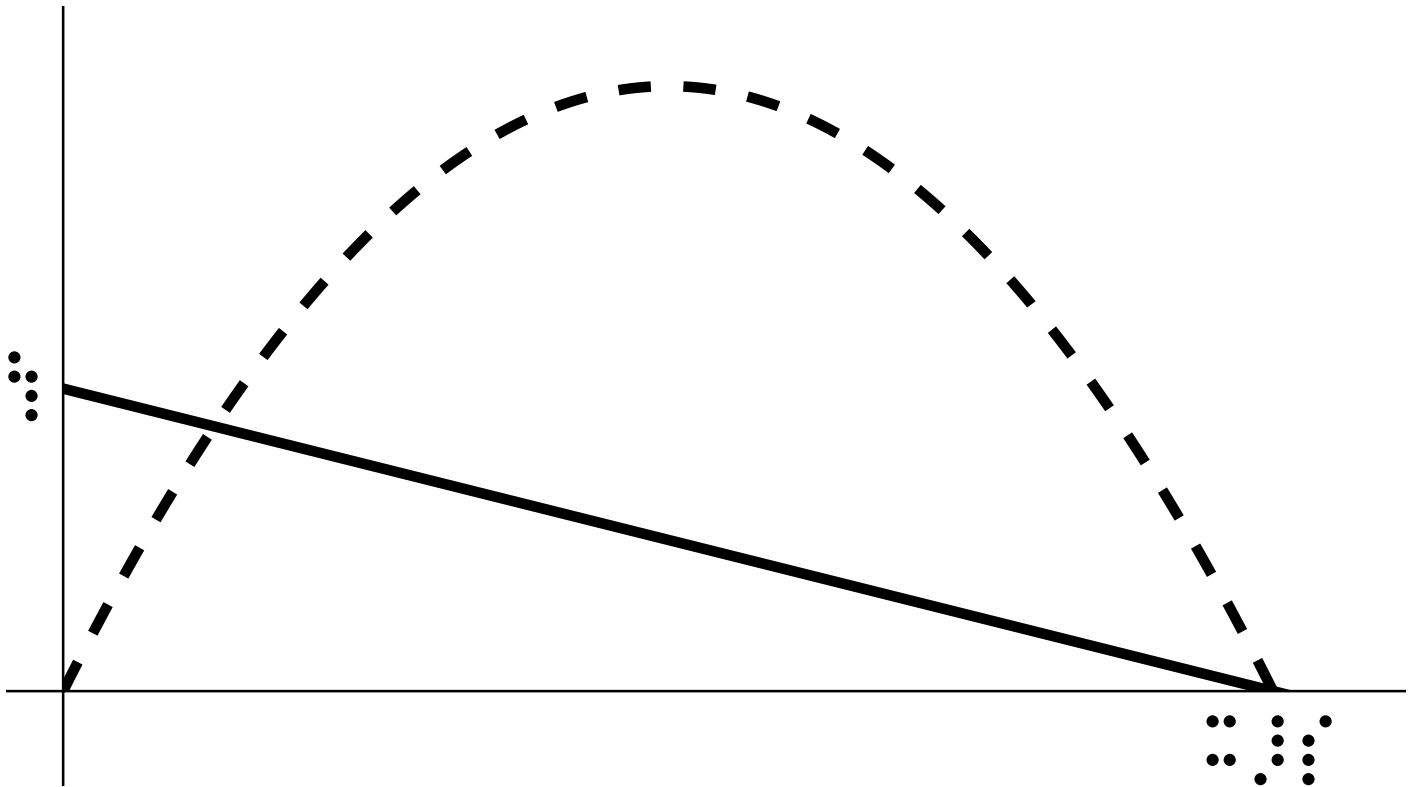
Wi Preis und Erlös, 5/16

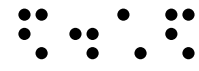
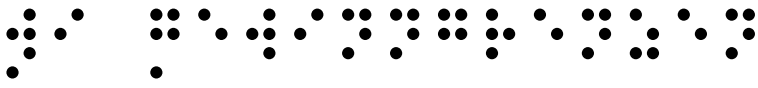


p; E

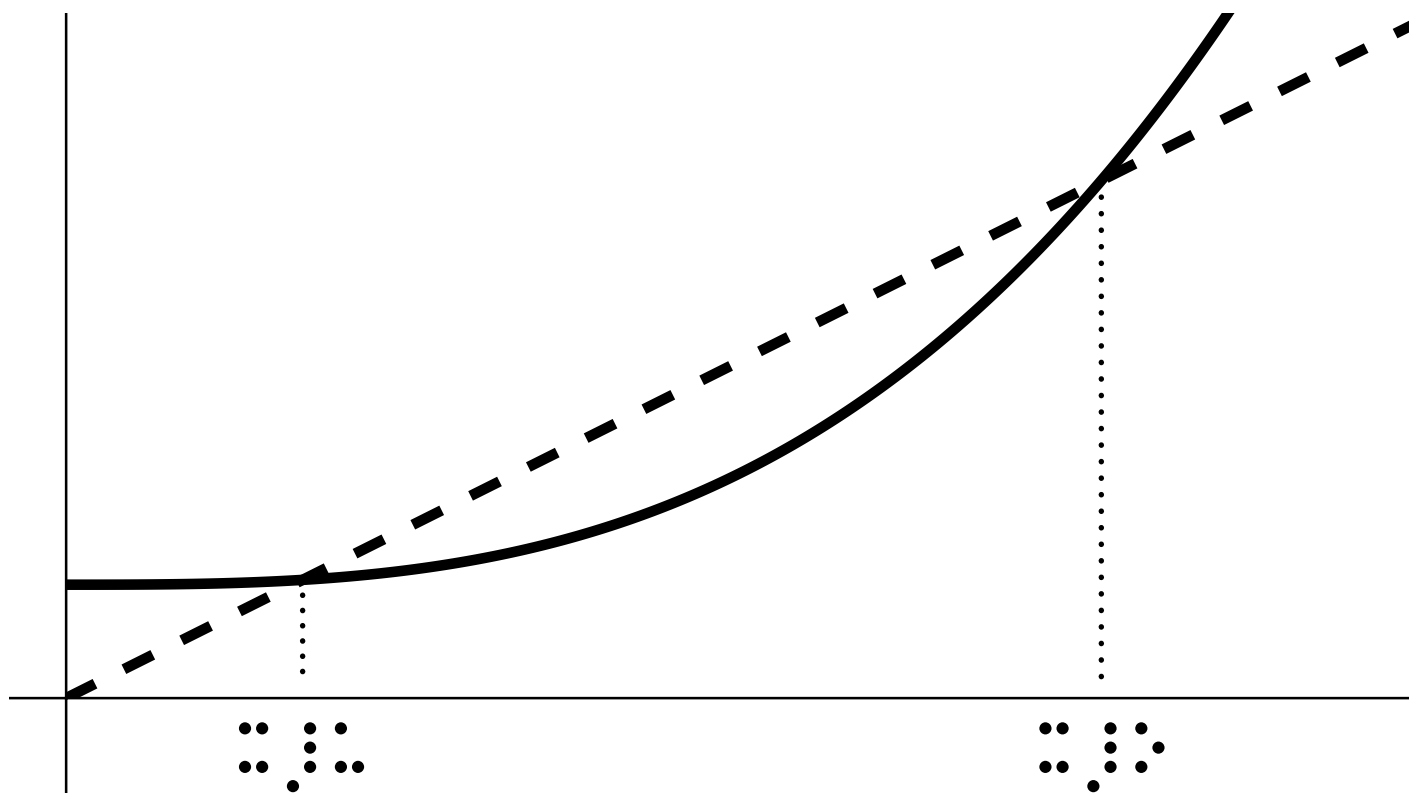
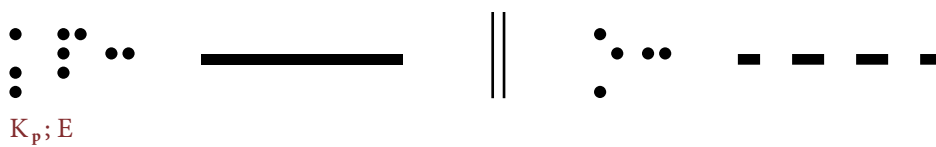
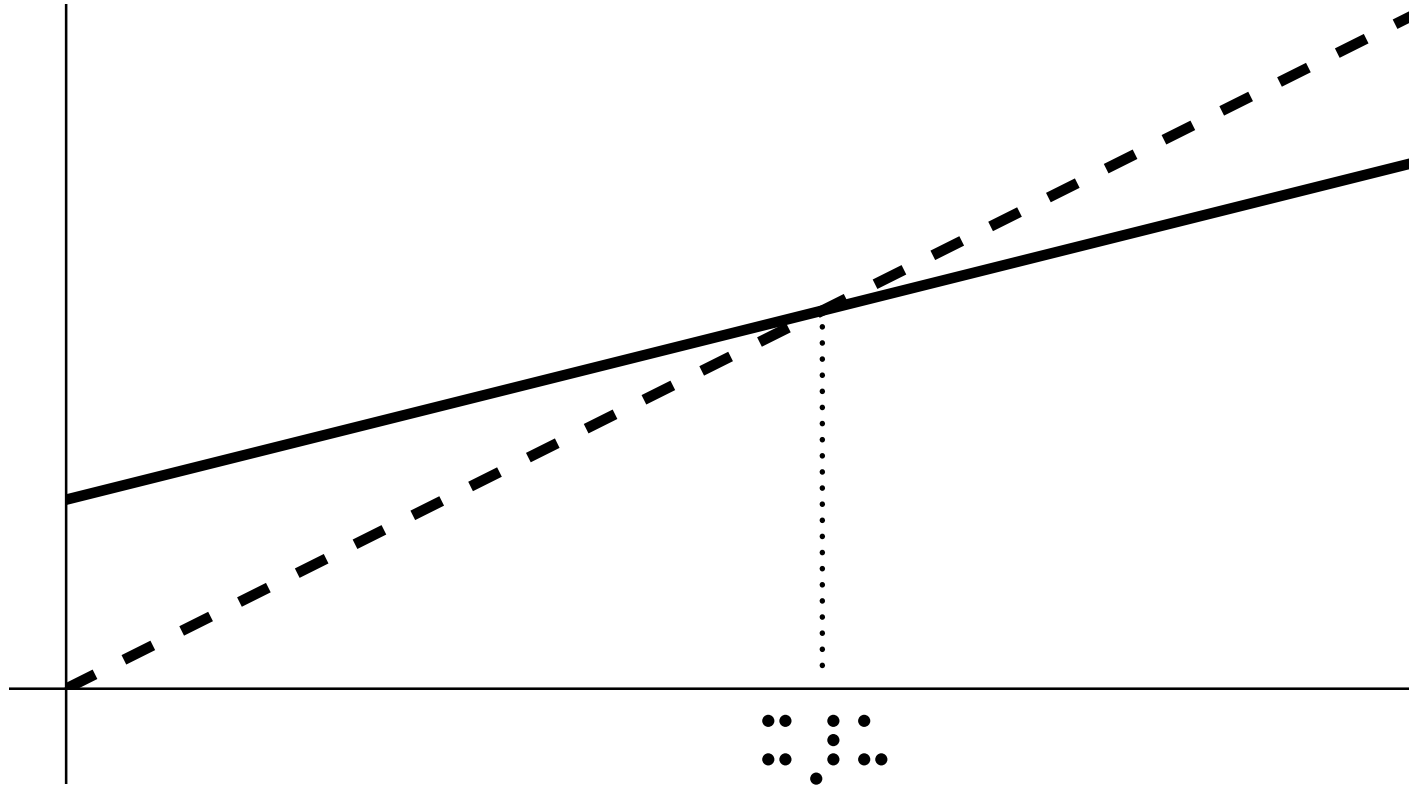
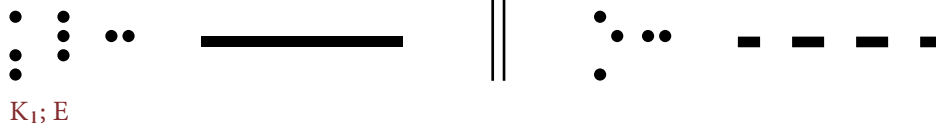


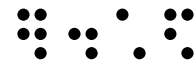
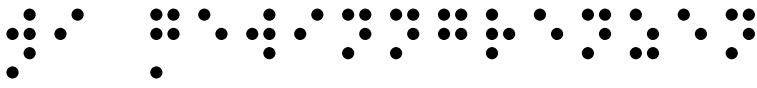
p(x); E_q



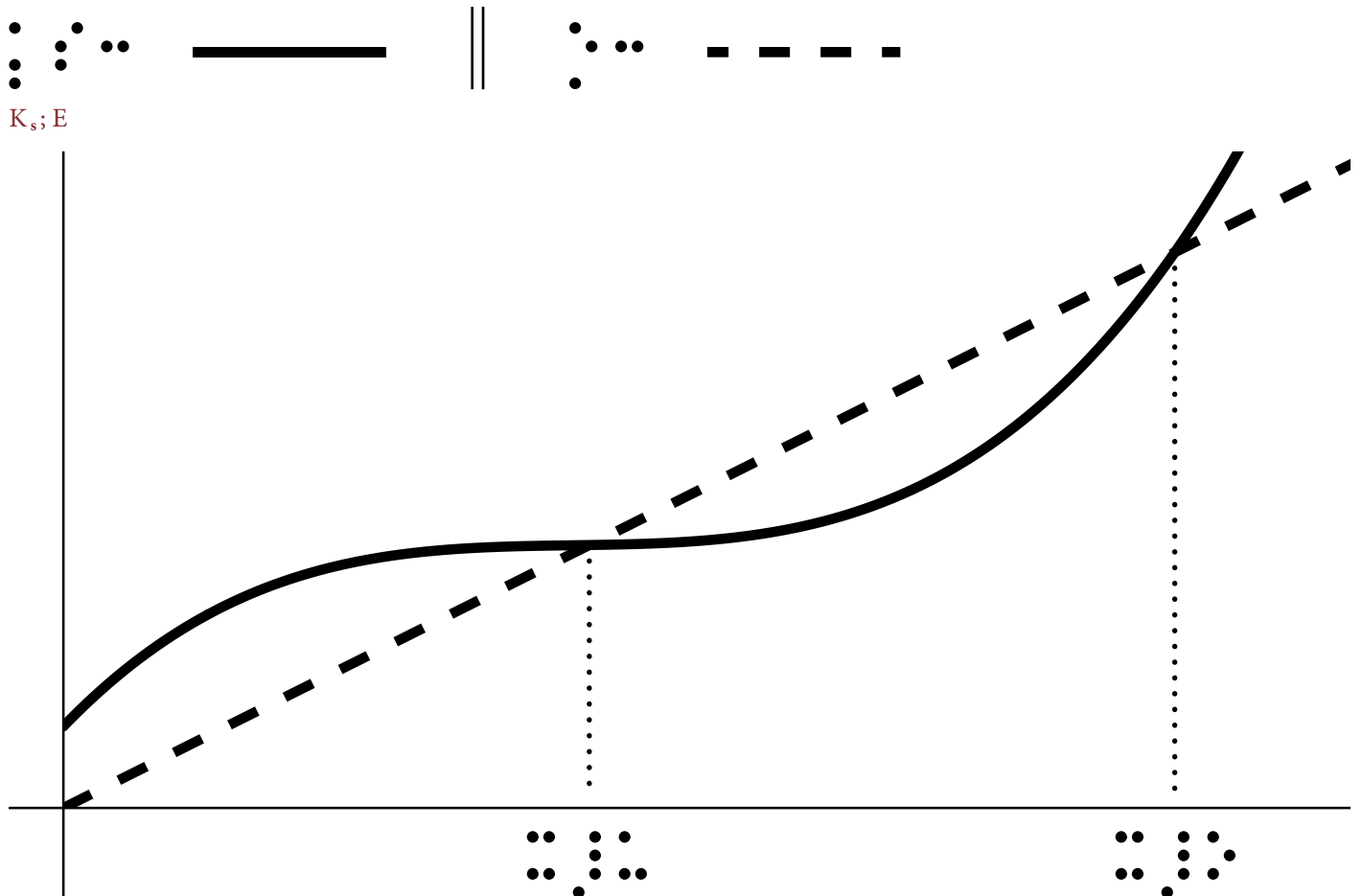
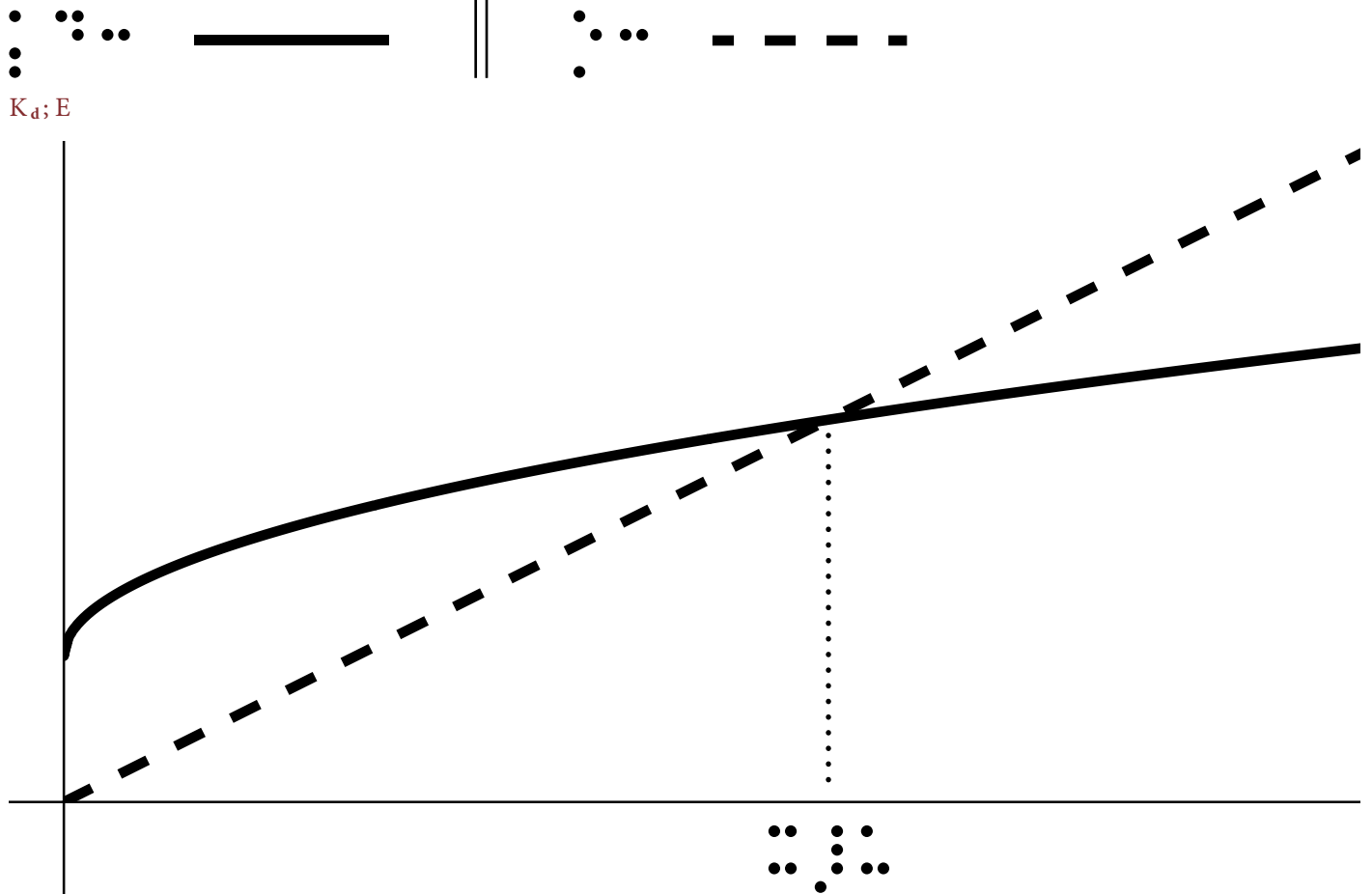


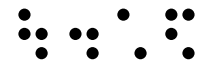
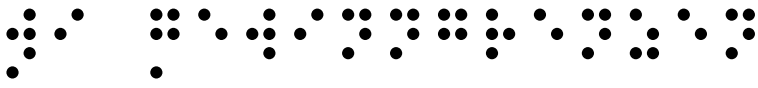
Wi Gewinngrenzen, 6/16



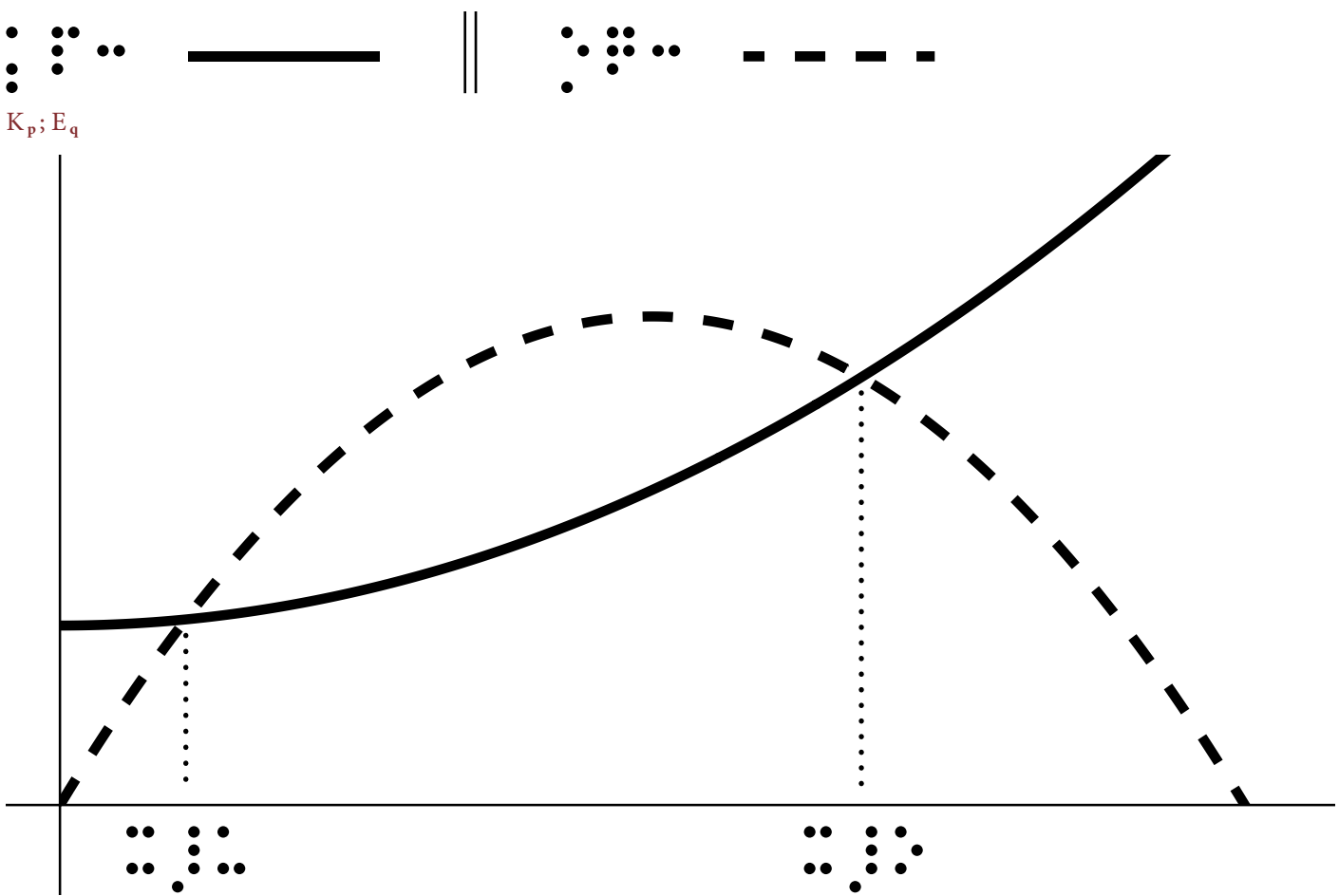
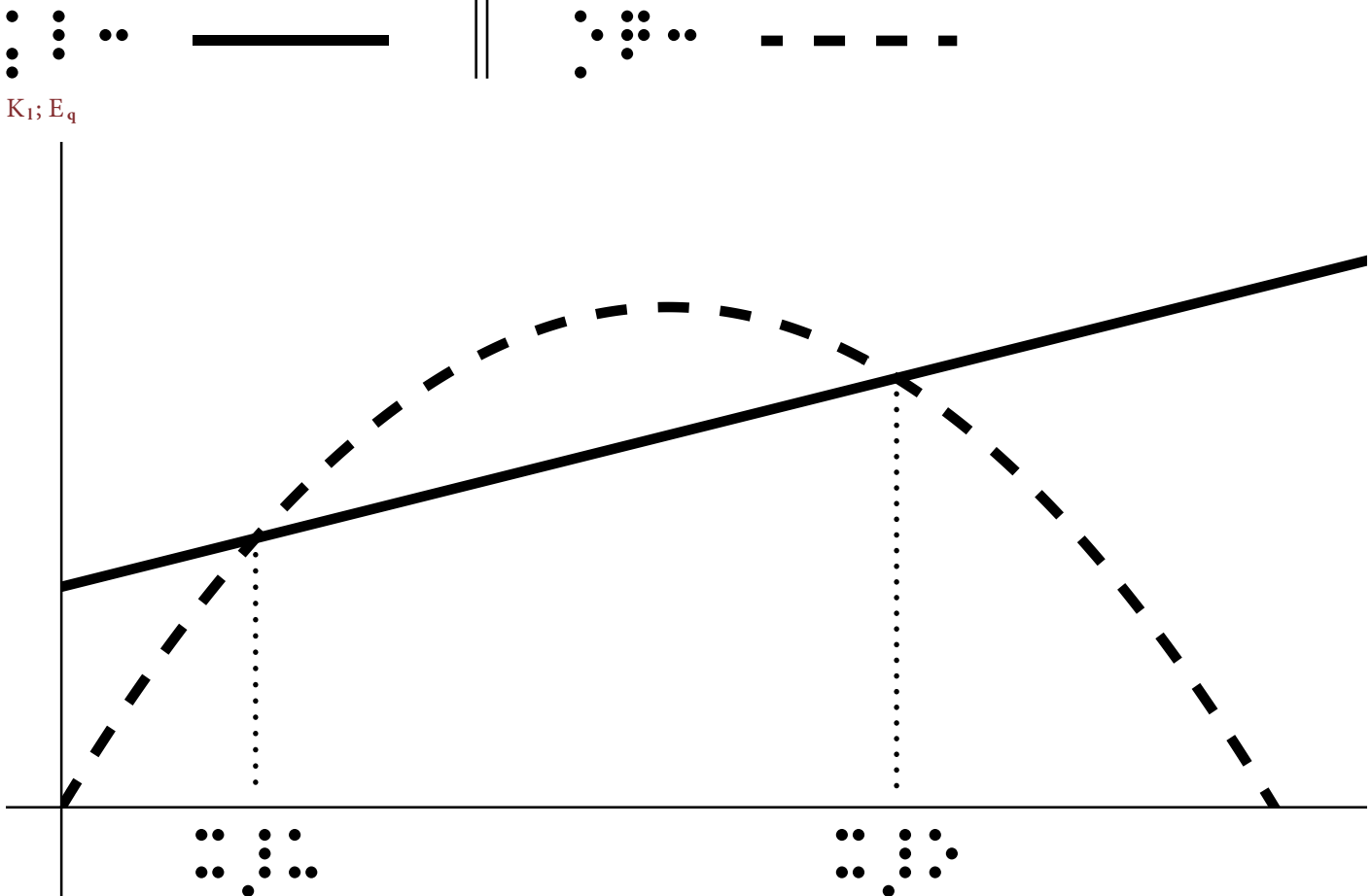


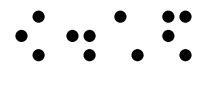
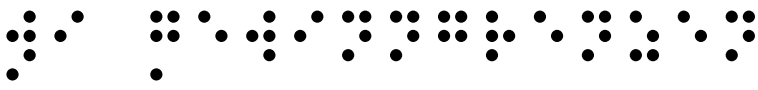
Wi Gewinngrenzen, 7/16



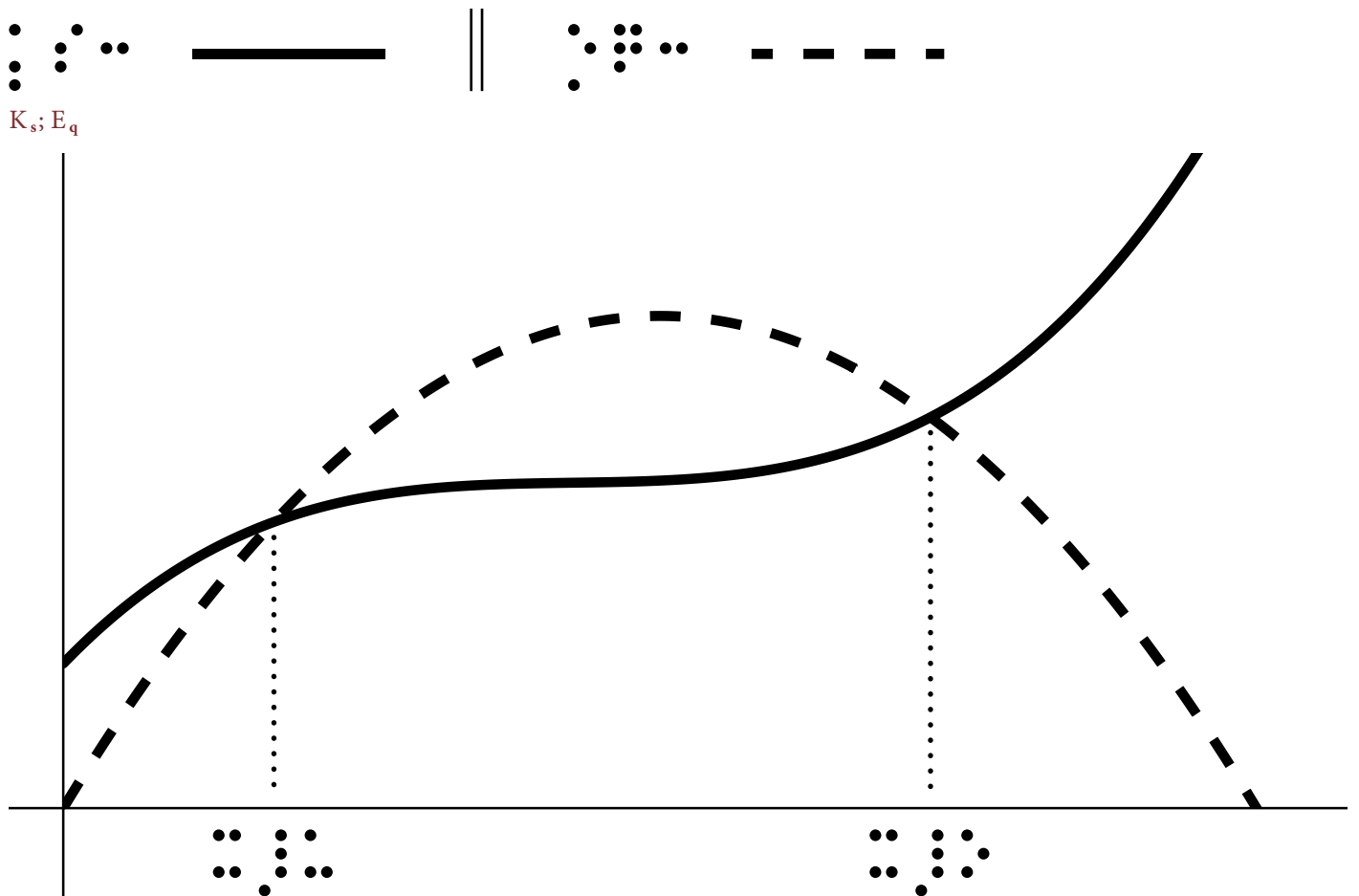
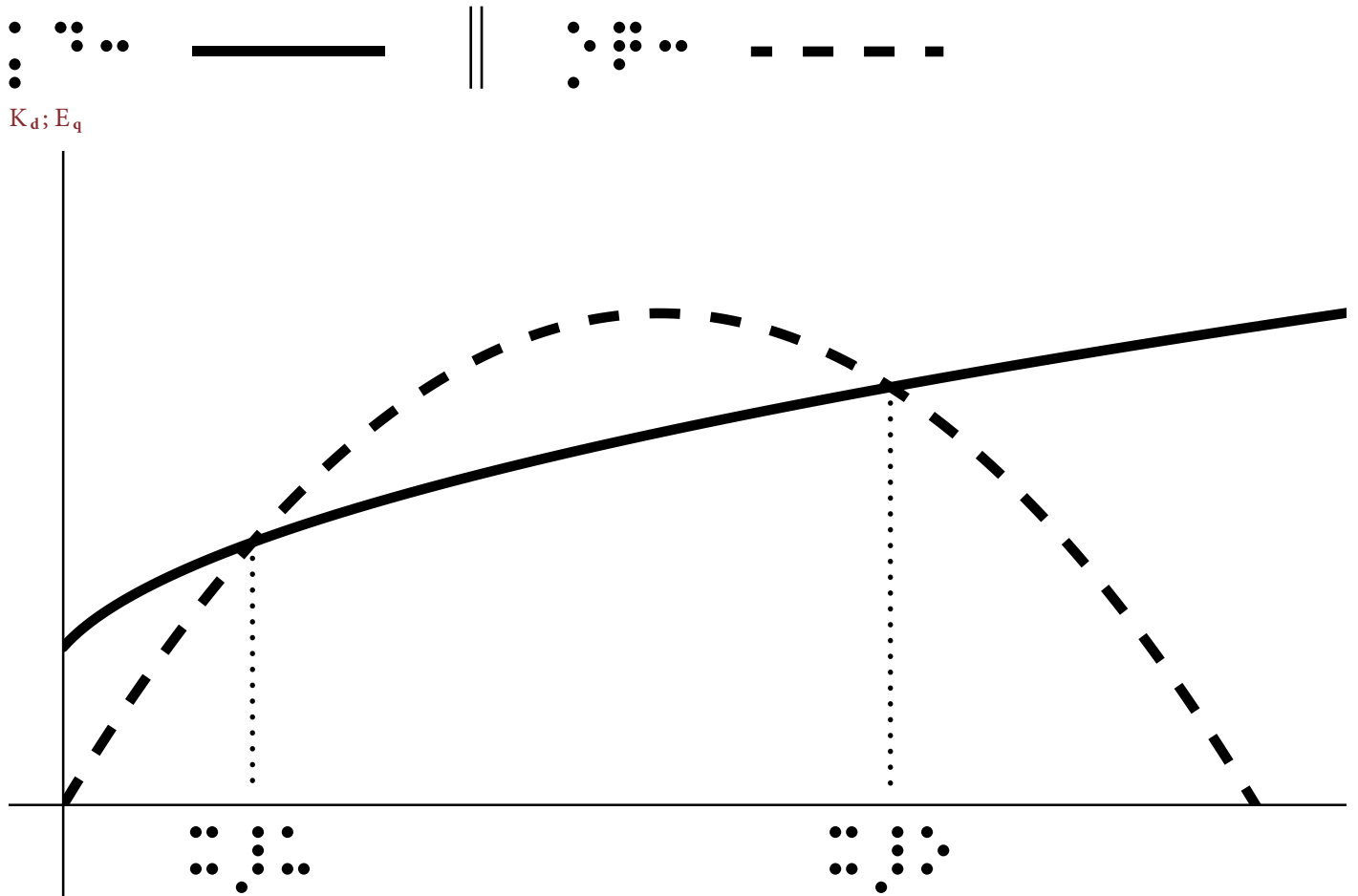


Wi Gewinngrenzen, 8/16





Wi Gewinngrenzen, 9/16

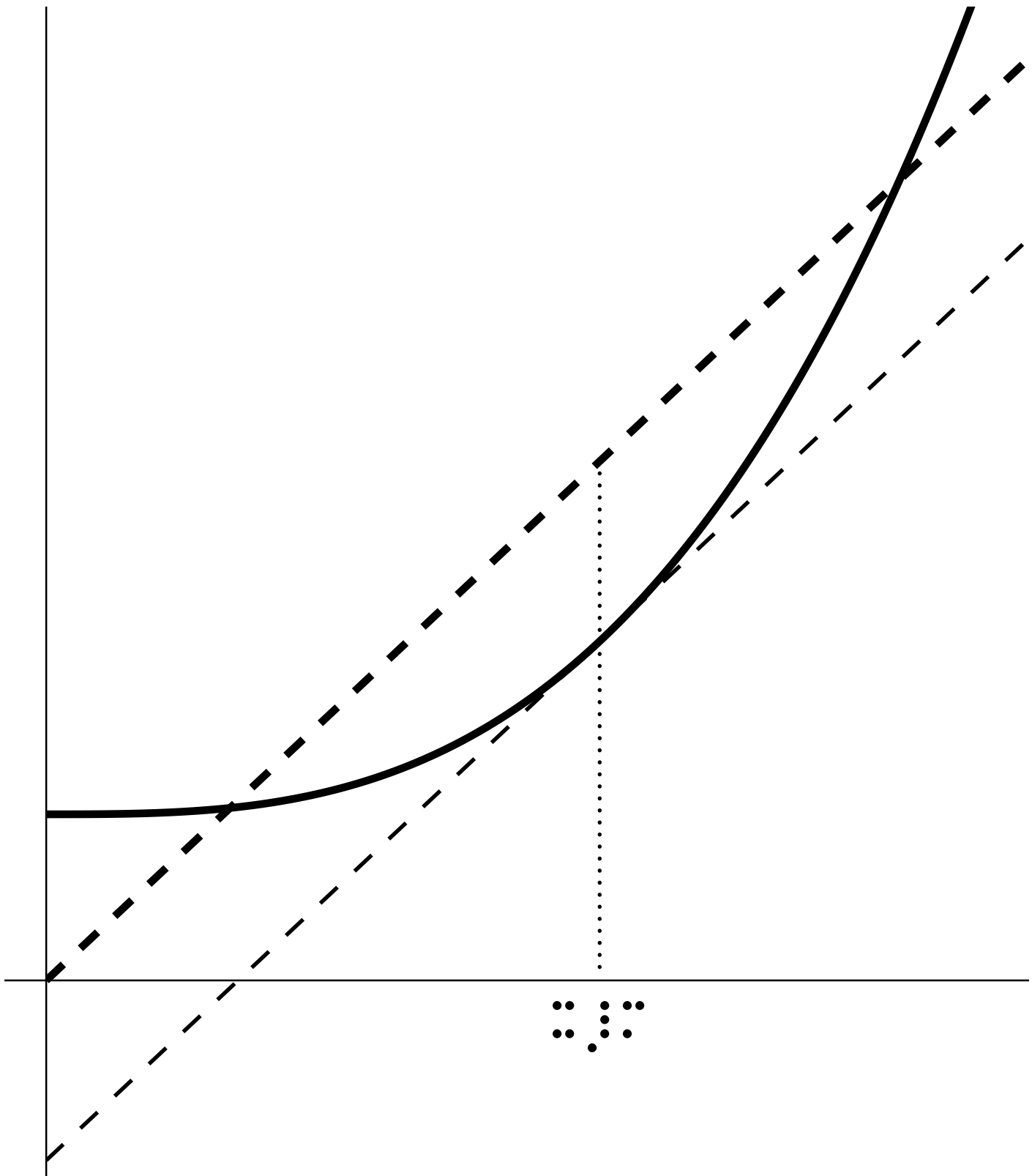




Wi Gewinnmaximierung, 10/16



$K_p; E = p \cdot x; E_{||}$

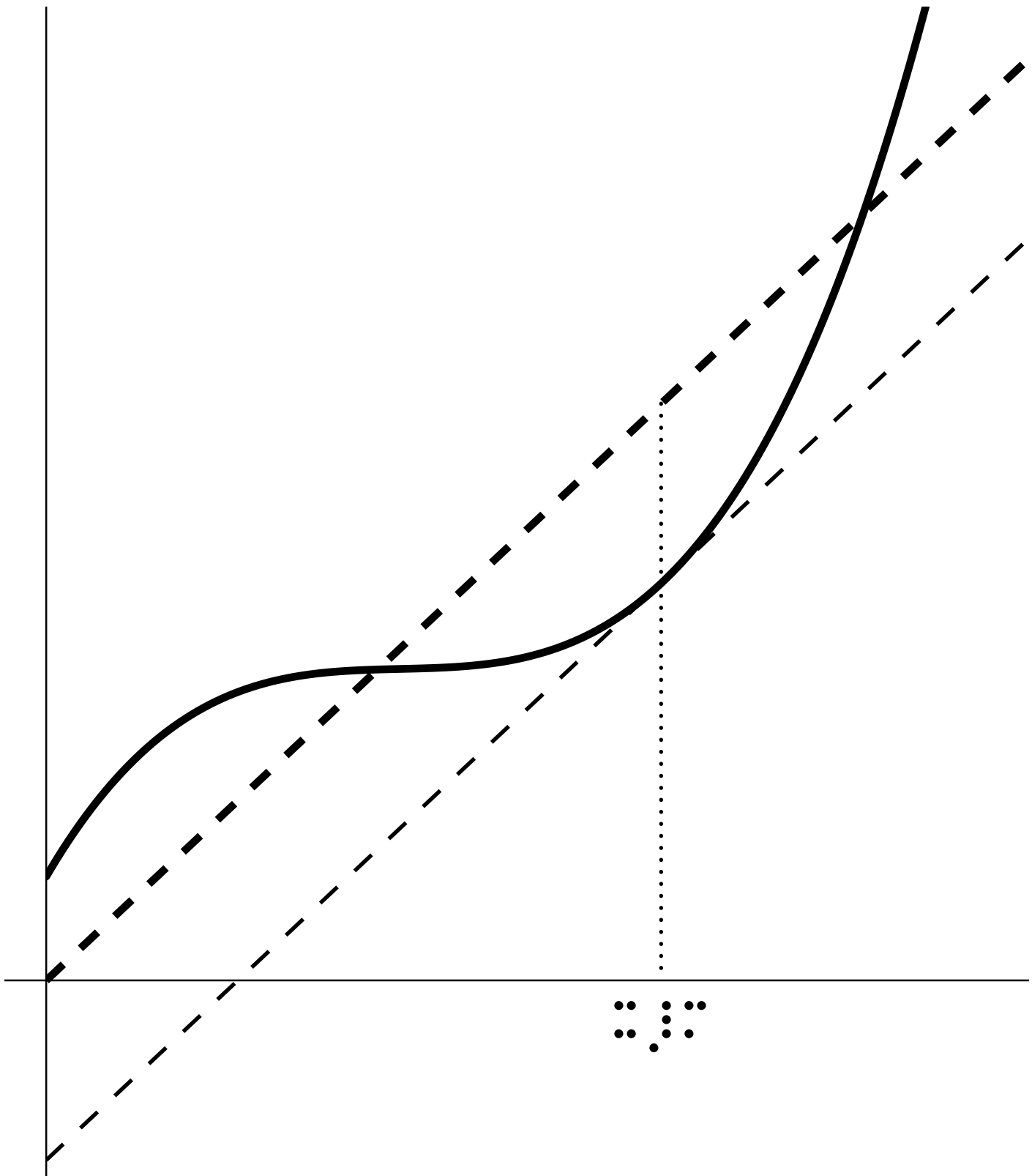


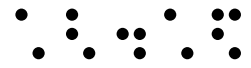
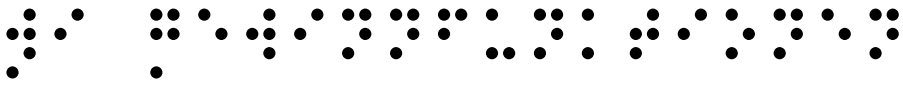


Wi Gewinnmaximierung, 11/16



$K_s; E = p \cdot x; E_{||}$

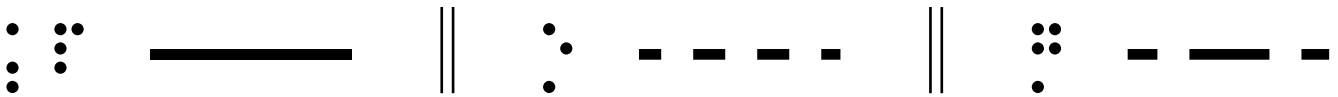
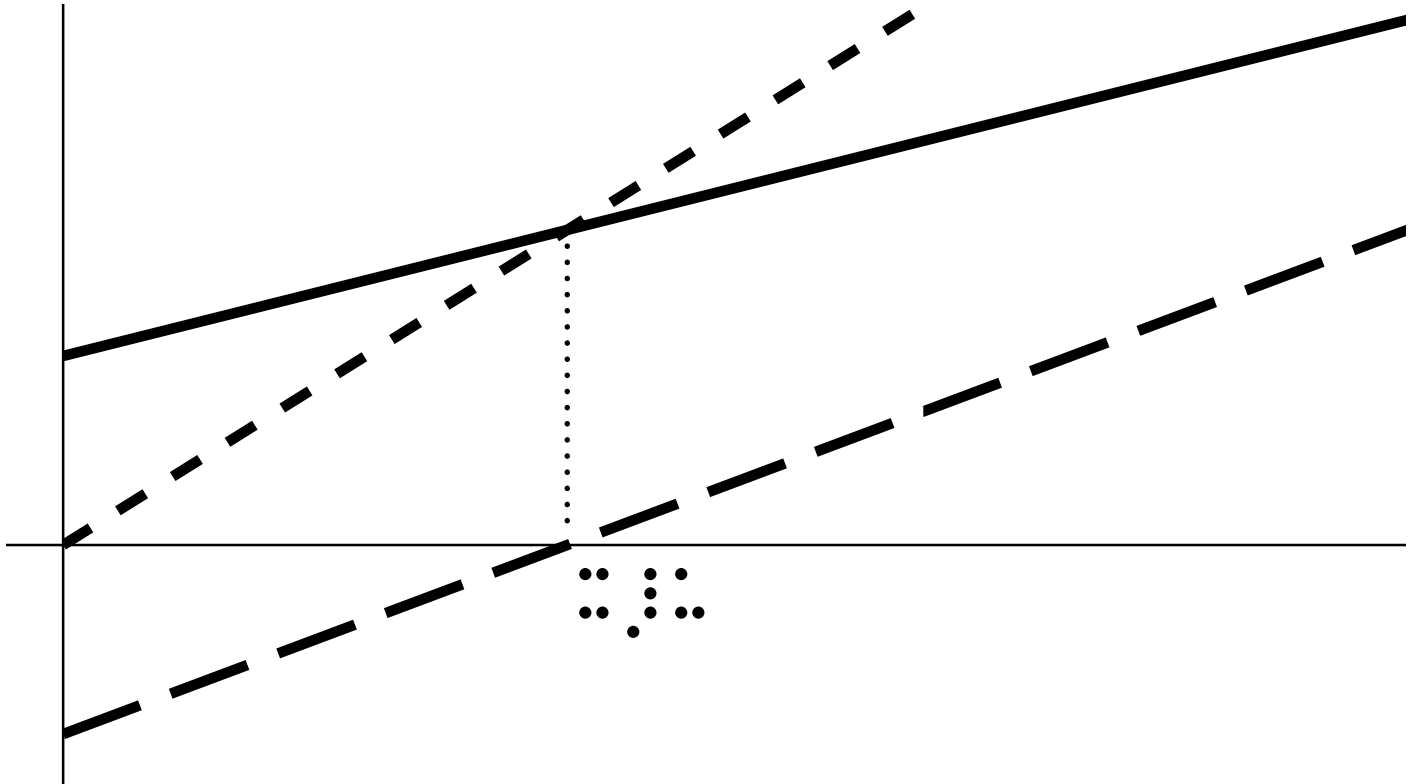




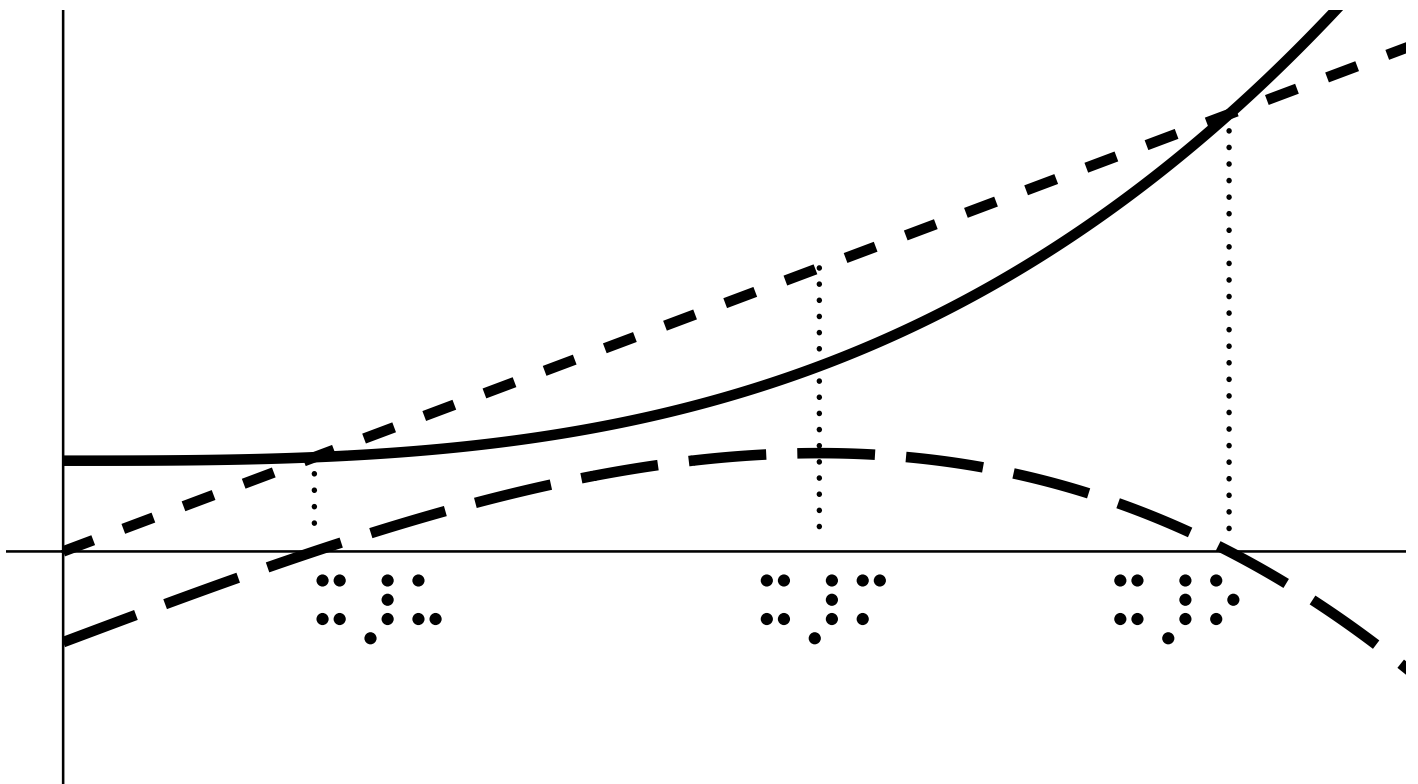
Wi Gewinnfunktionen, 12/16

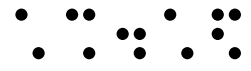
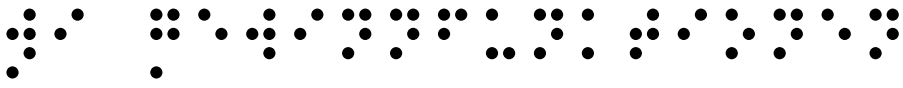


$K_1; E; G$



$K_p; E; G$

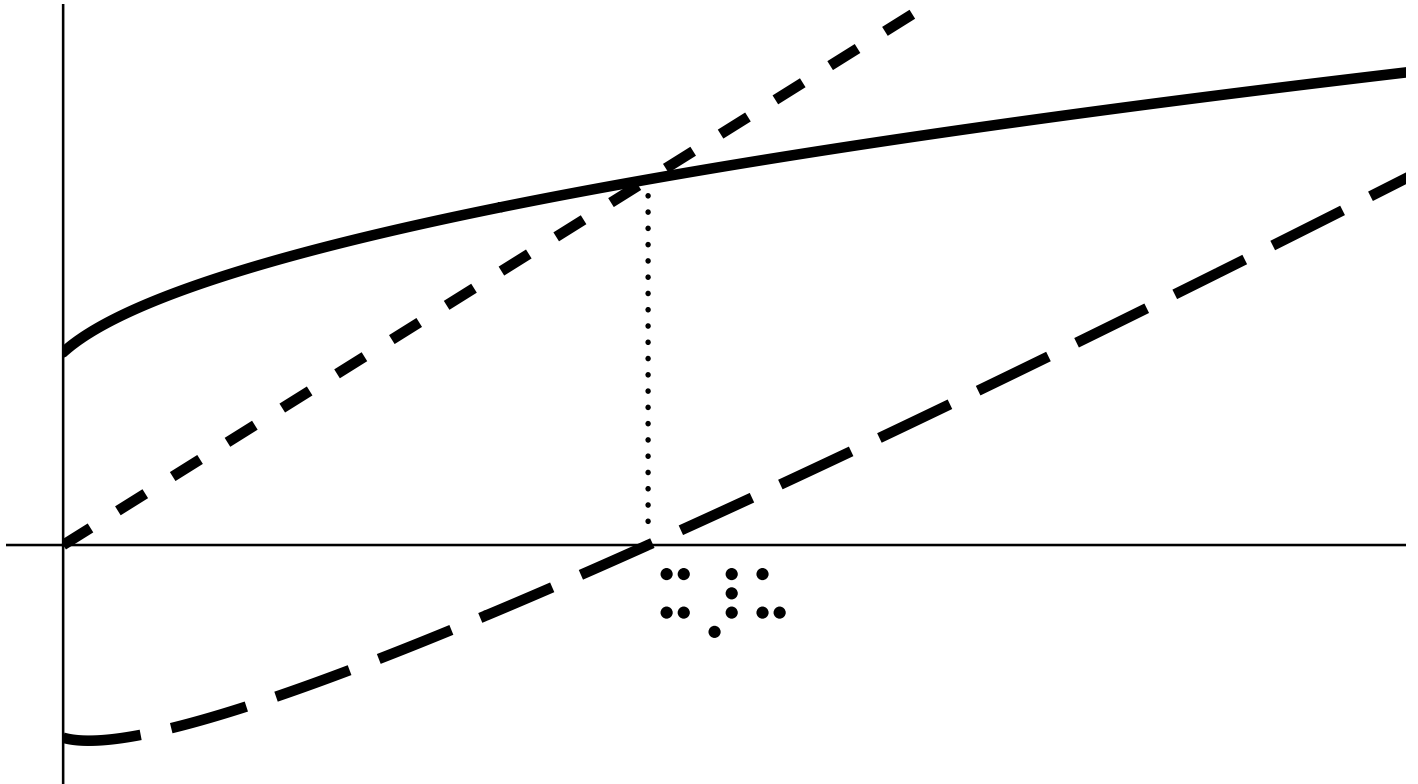




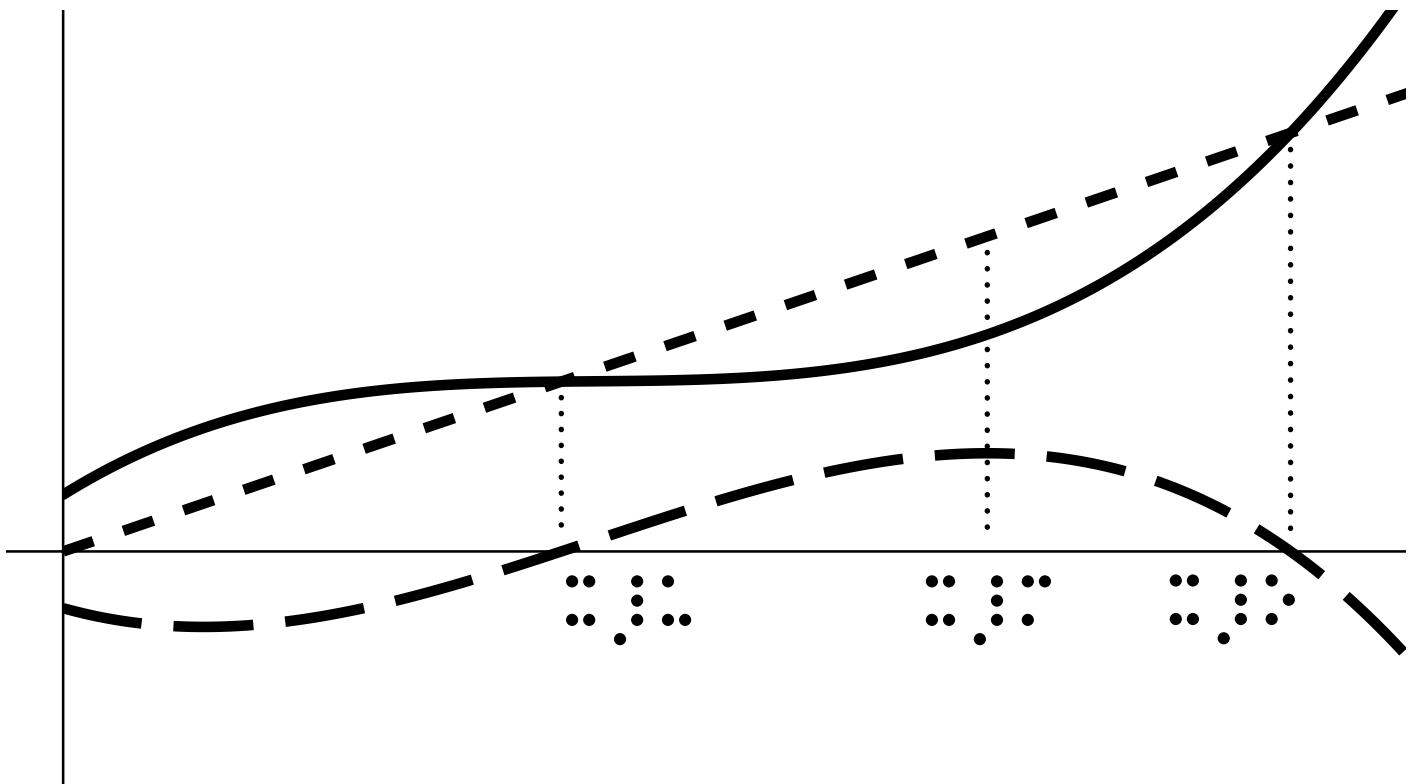
Wi Gewinnfunktionen, 13/16



$K_d; E; G$



$K_s; E; G$

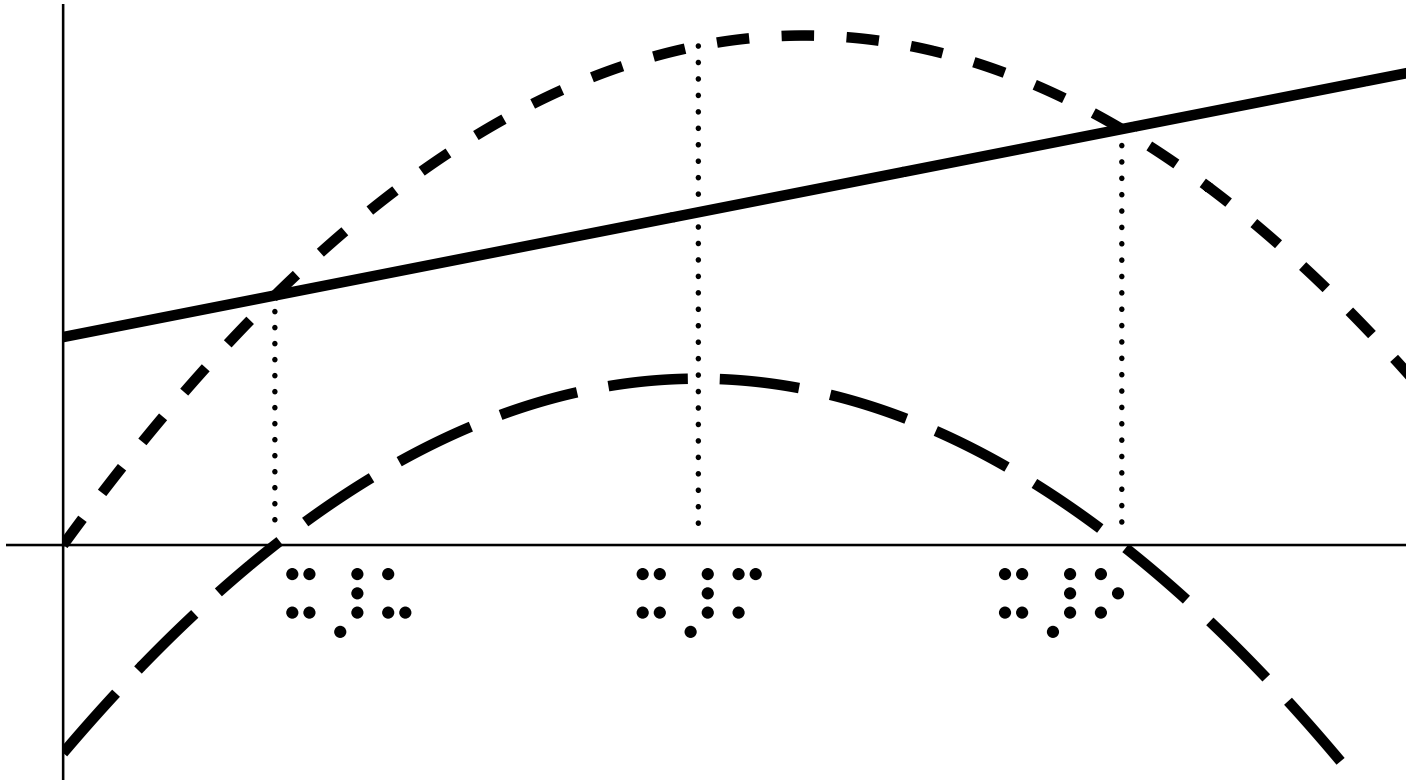




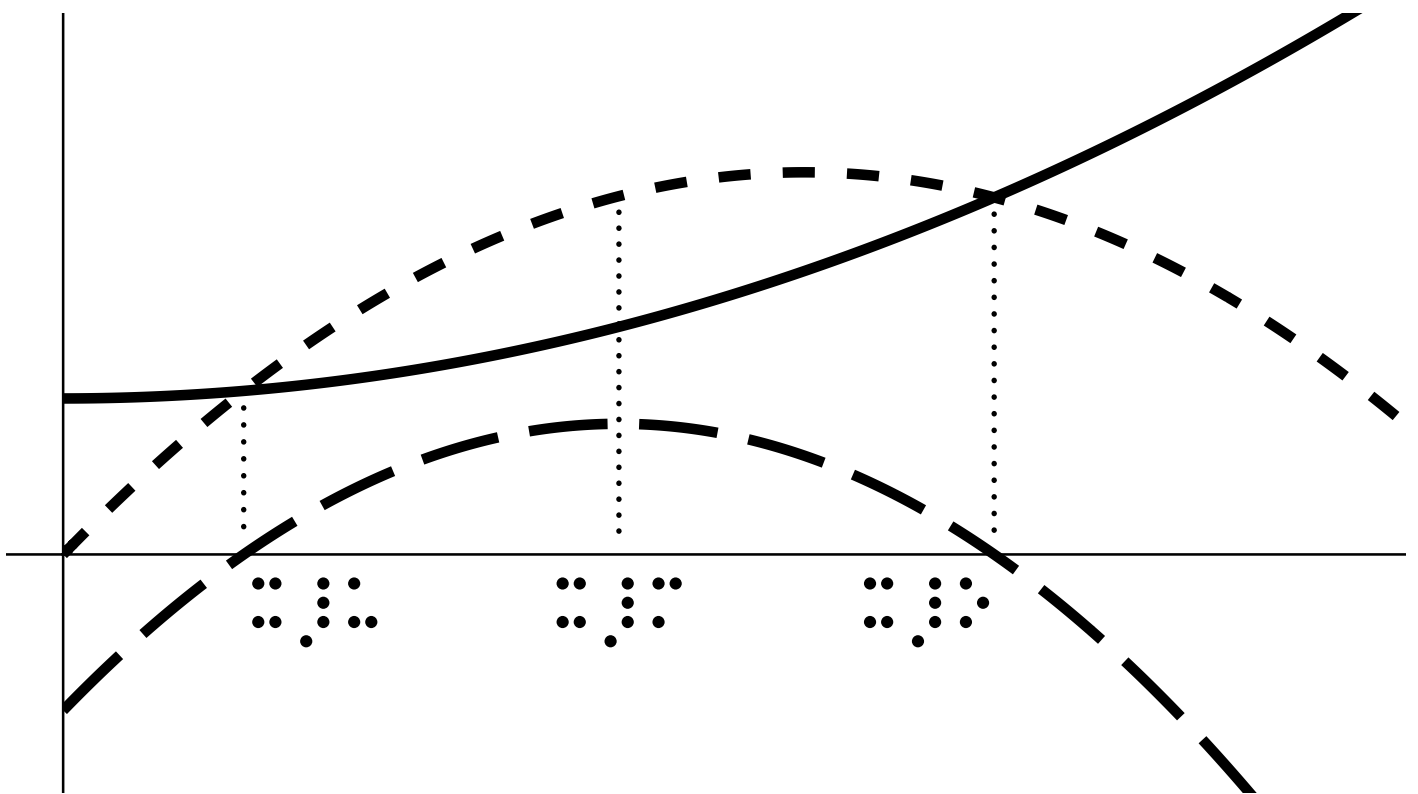
Wi Gewinnfunktionen, 14/16

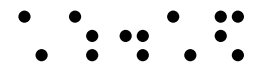
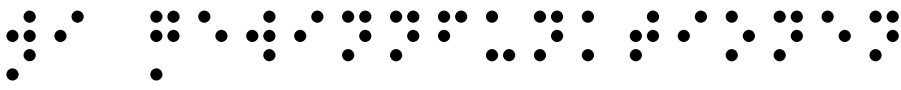


$K_1; E_q; G$



$K_p; E_q; G$

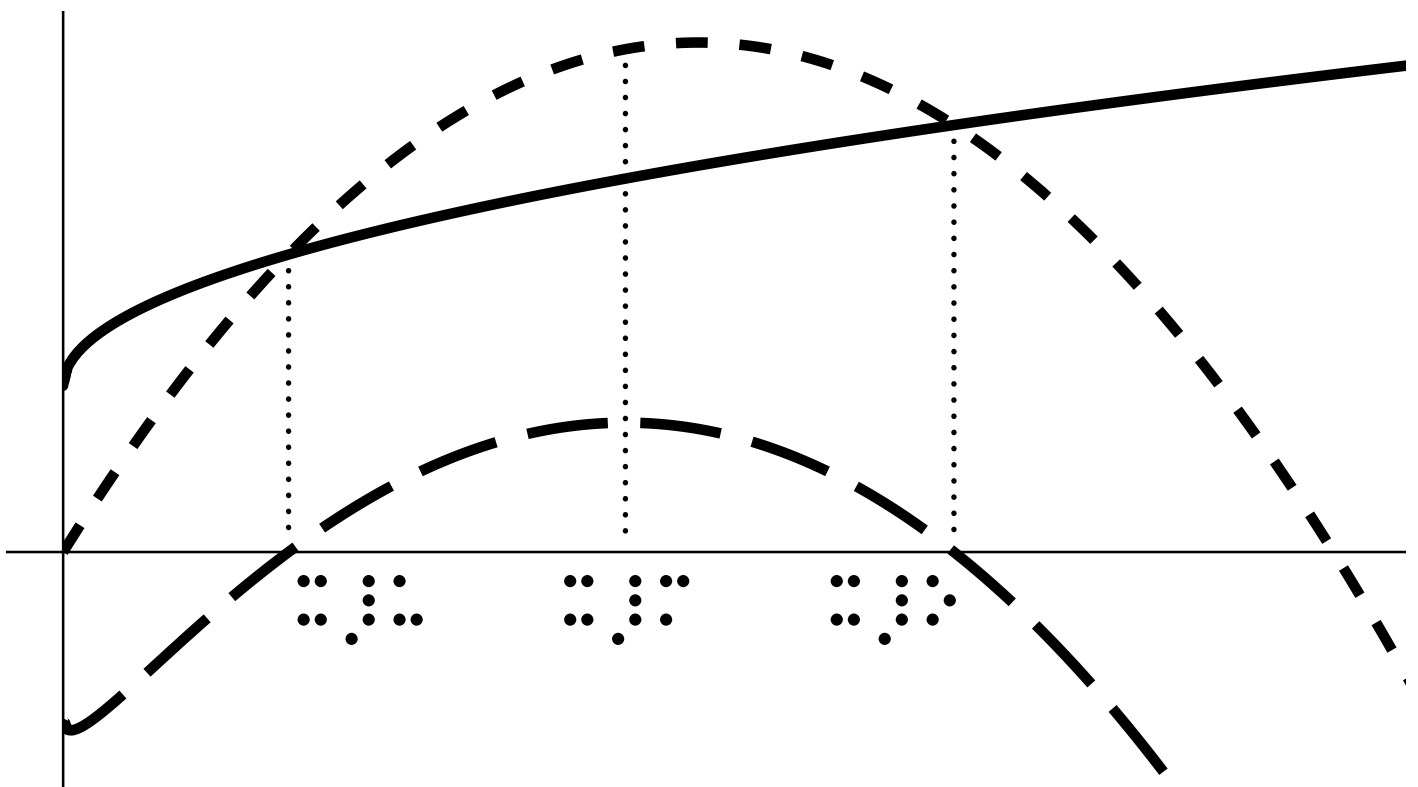




Wi Gewinnfunktionen, 15/16



$K_d; E_q; G$



$K_s; E_q; G$

