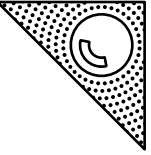


Biologie - Tierzellen: Aufbau



Endoplasmatisches Retikulum

Endoplasmatisches Retikulum

Zellmembran

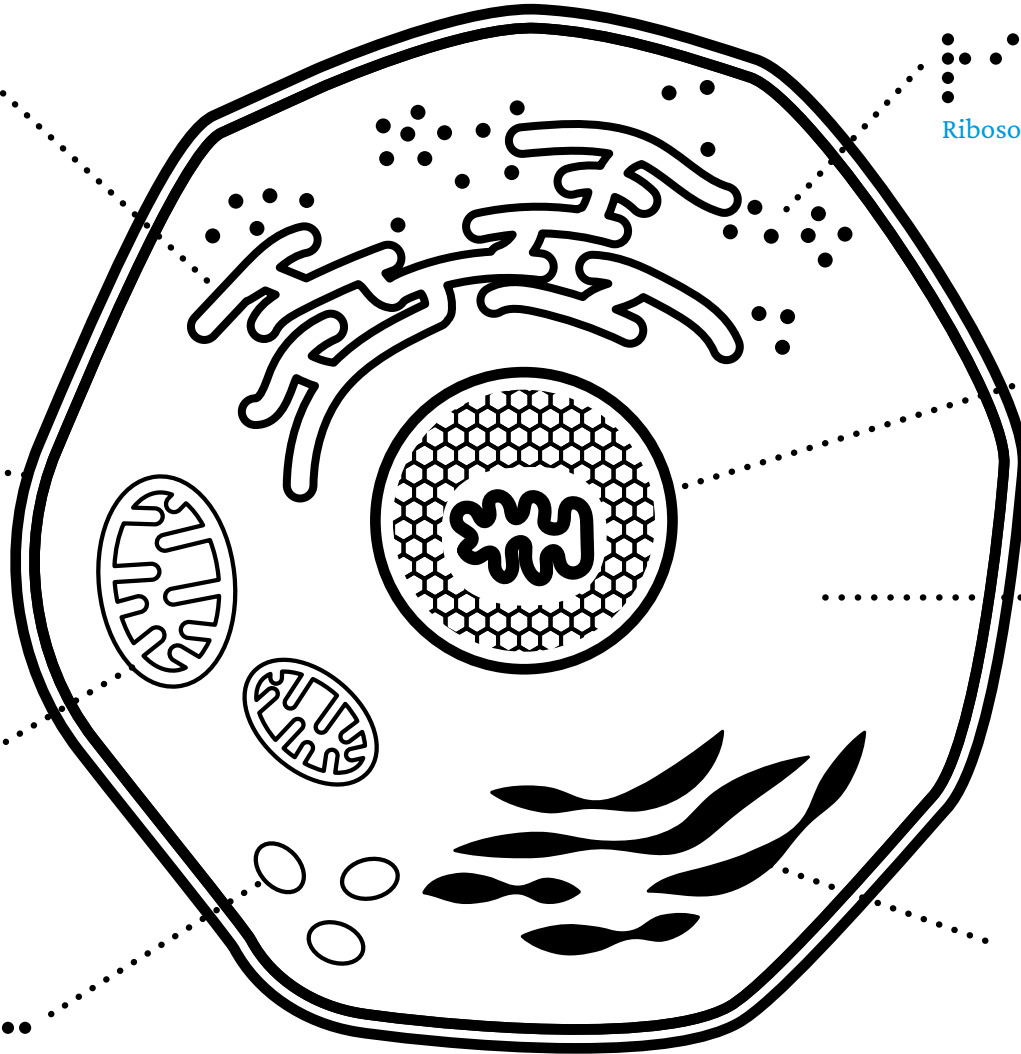
Zellmembran

Mitochondrium

Mitochondrium

Lysosom

Lysosom



Ribosomen

Ribosomen

Zellkern

Zellkern

Zellplasma

Zellplasma

Golgi-Apparat

Golgi-Apparat